

OCT 18 2 19 PM 1965

GELIE F. SAWWORTH
S.M.C.

OCT 18 1965

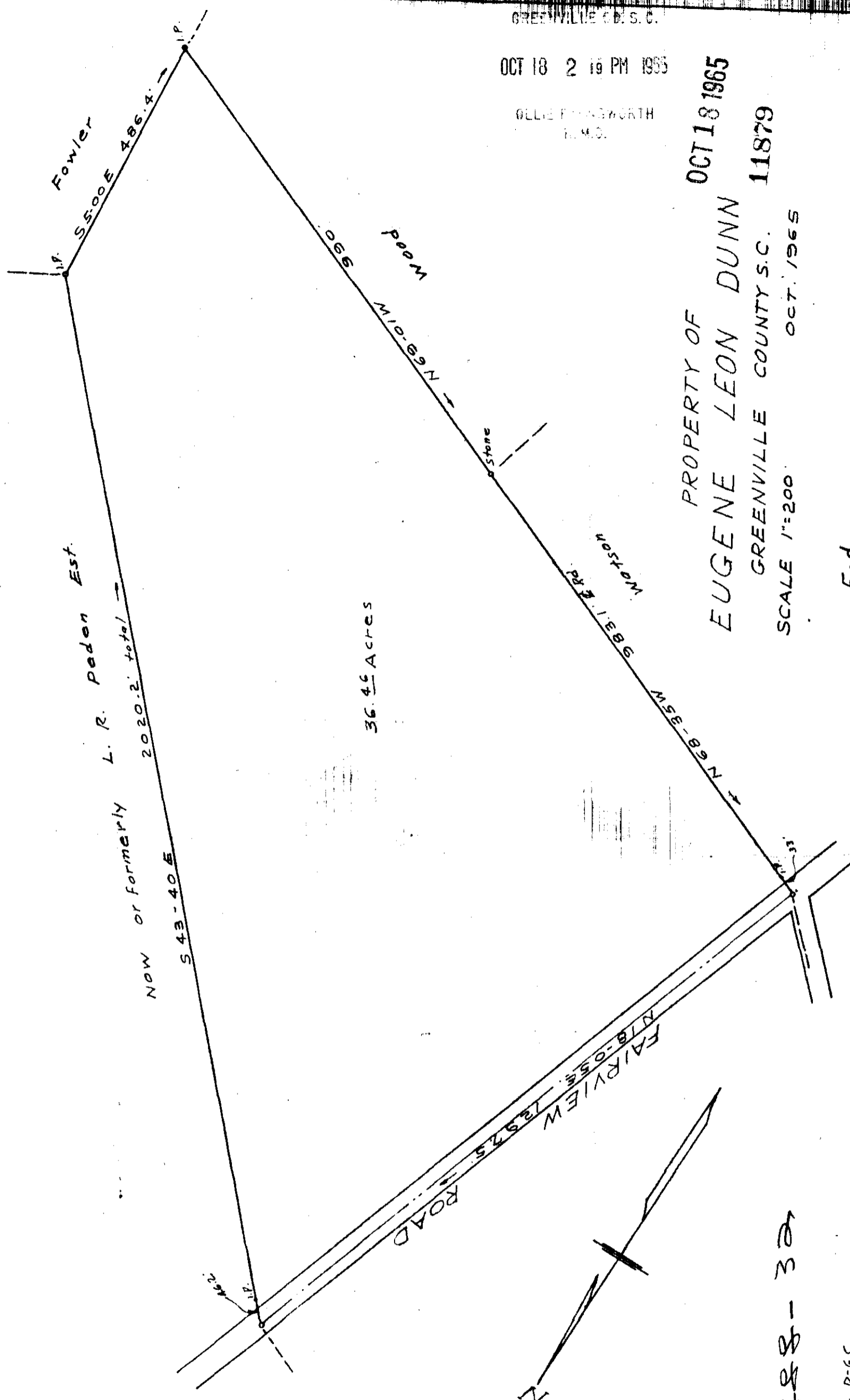
PROPERTY OF
EUGENE LEON DUNN

GREENVILLE COUNTY S.C. 11879

SCALE 1"=200' OCT. 1965

504

C.O. Riddle, Reg. S. #1347



11879 Filed This 18 day of Oct 1965
 And Recorded in Vol. 888 Page 37 at 2:19 P.M.
 Gelia F. Sawworth
 Register Mesne Conveyance Greenville County, S. C.

888-37

F.B. P-65